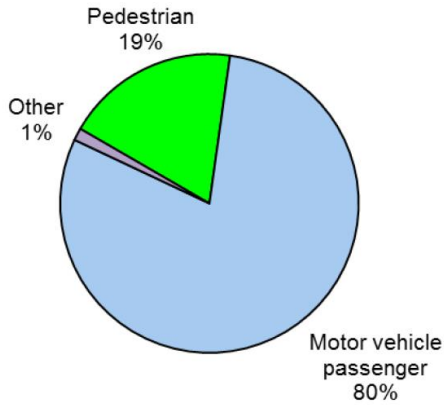
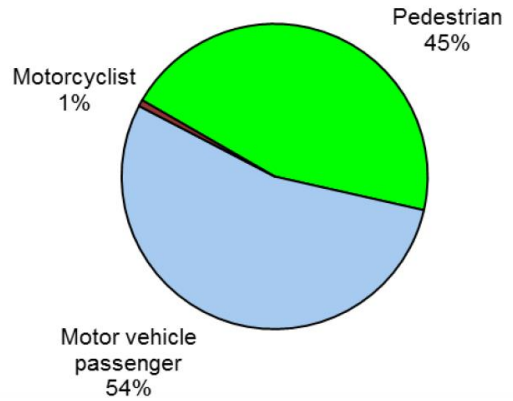


# Traffic injury charts and statistics

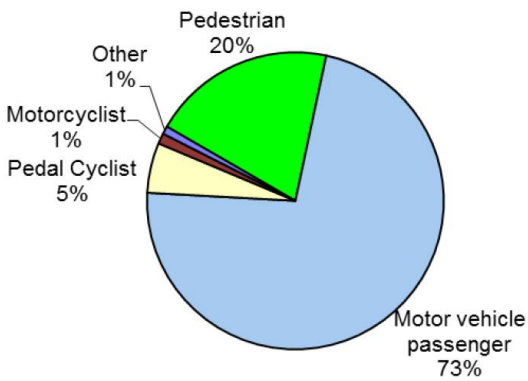
**Casualties, 0-4 Years, NSW, 2013-2015 Three Year Average**



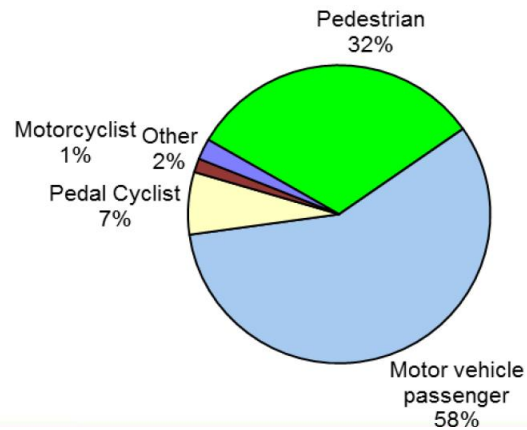
**Serious Casualties, 0-4 Years, NSW, 2013-2015 Three Year Average**



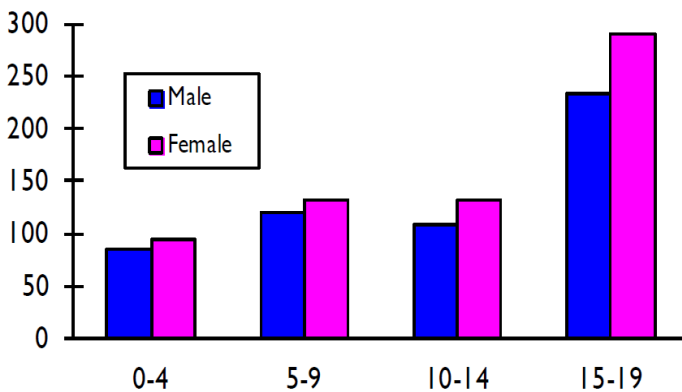
**Casualties, 5-9 Years, NSW, 2013-2015 Three Year Average**



**Serious Casualties, 5-9 Years, NSW, 2013-2015 Three Year Average**



**Casualties, Motor Vehicle Passengers, 2013-2015 Three Year Average**



**Serious Casualties, Passengers, 2013-2015 Three Year Average**

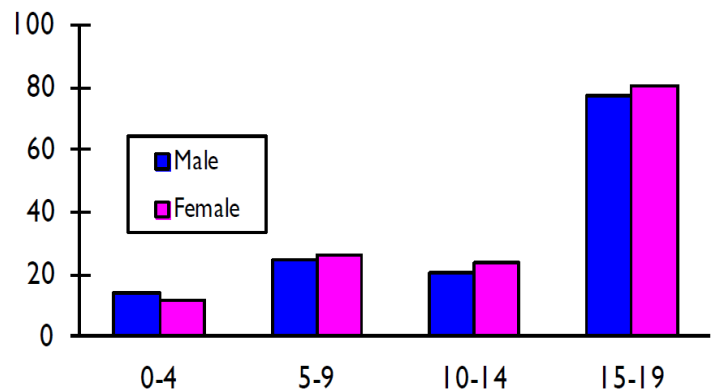


Chart One. Passenger casualties by five year age group, NSW, 2013-2015.

# Traffic injury charts and statistics

**Casualties, Pedestrians,  
2013-2015 Three Year Average**

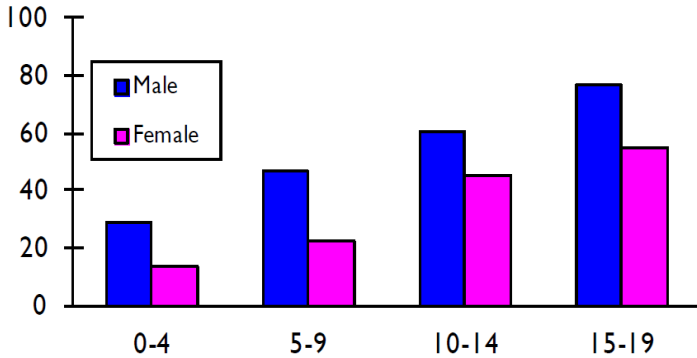
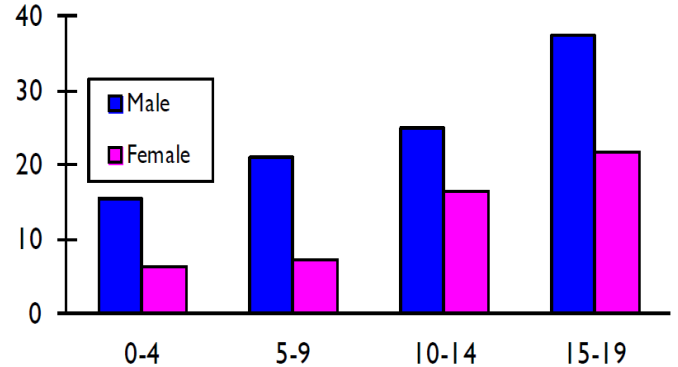


Chart Two. Pedestrian casualties by five year age group, NSW, 2013-2015.

**Serious Casualties, Pedestrians,  
2013-2015 Three Year Average**



**Casualties, Pedal Cyclists,  
2013-2015 Three Year Average**

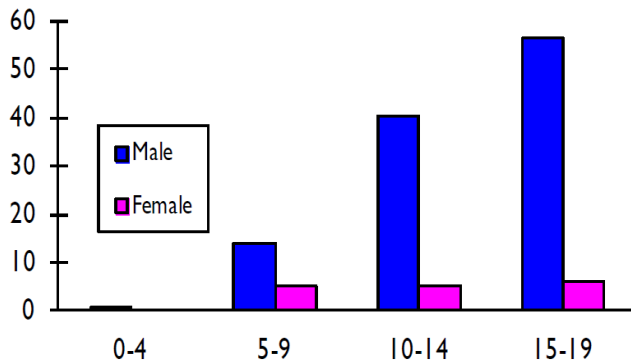
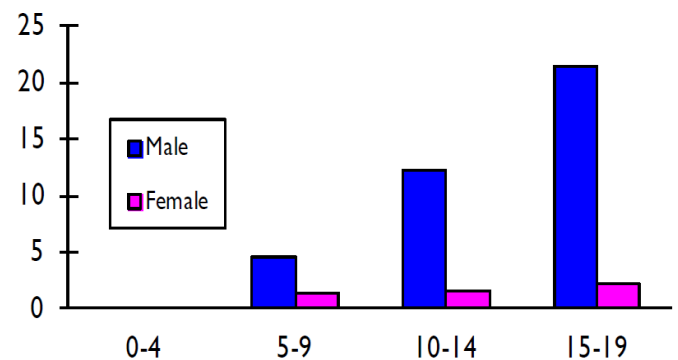


Chart Three. Cyclist casualties by five year age group, NSW, 2013-2015.

**Serious Casualties, Pedal Cyclists,  
2013-2015 Three Year Average**



**Casualty:** any person killed or injured because of a crash

**Serious injury status:** Total serious injuries comprise two categories: those persons that are matched to a police report and those persons that are not matched to a police report.

**Seriously injured (matched):** A person identified in CrashLink (casualty or driver or rider) who is matched to a hospital admission record on the same day or on the day after a crash and did not die within 30 days of the crash, and is admitted with at least one injury diagnosis; or linked to an iCare (Lifetime Care) participant record.

**Seriously injured (unmatched):** A person not matched to a police report but has been identified as having an injury on a public road or injury on a traffic-public road for the hospital stay.

**Charts One to Three** illustrate how casualties vary according to road user type, gender of child and age grouping. Though injuries occur much more frequently among male pedestrians and cyclists than among females in almost all of the age groupings illustrated above, child passenger casualties are not strongly differentiated by gender.