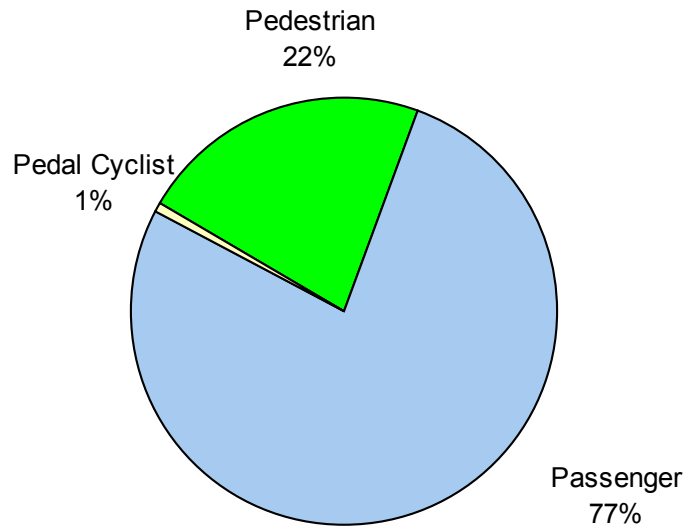
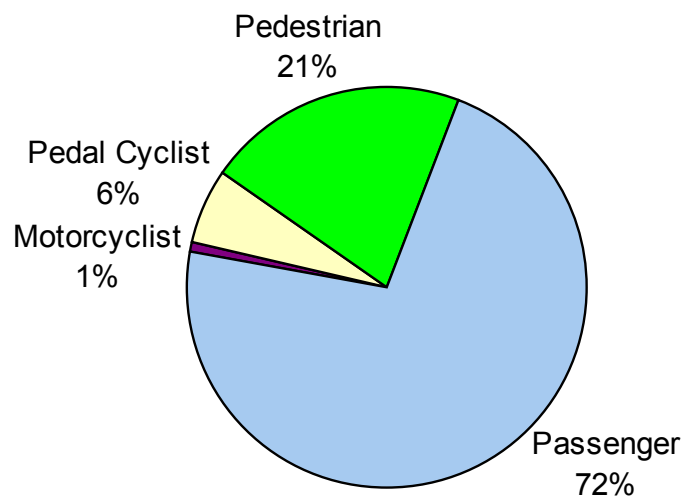


Transport for NSW Traffic Injury Statistics for Children

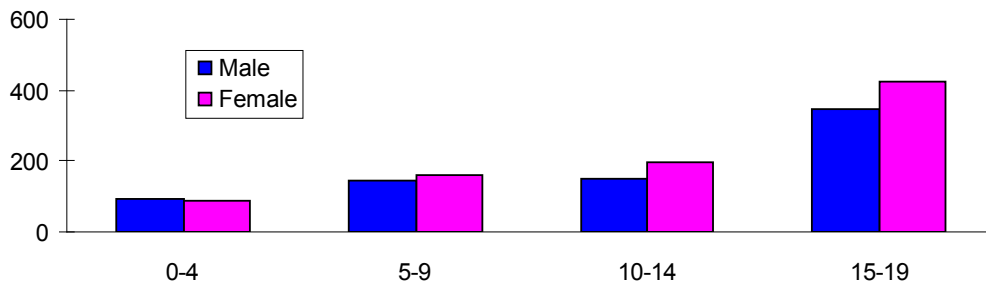
Casualties, 0-4 years, NSW, 2009-2011 Three Year Average



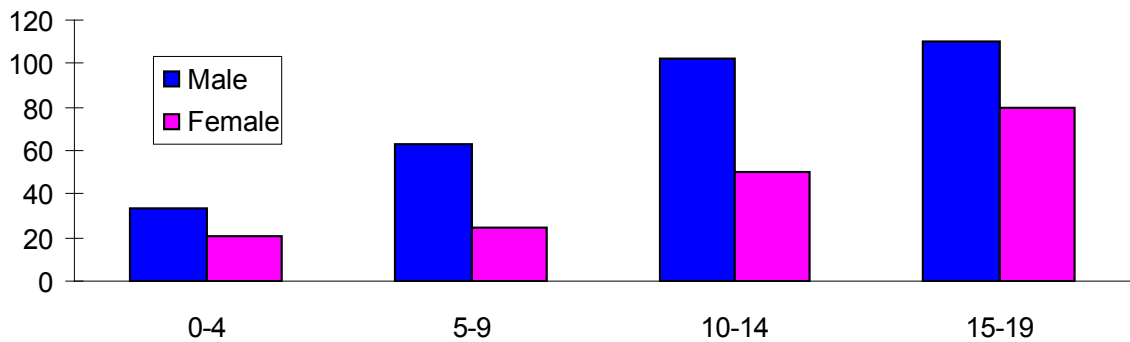
Casualties, 5-9 years, NSW, 2009-2011 Three Year Average



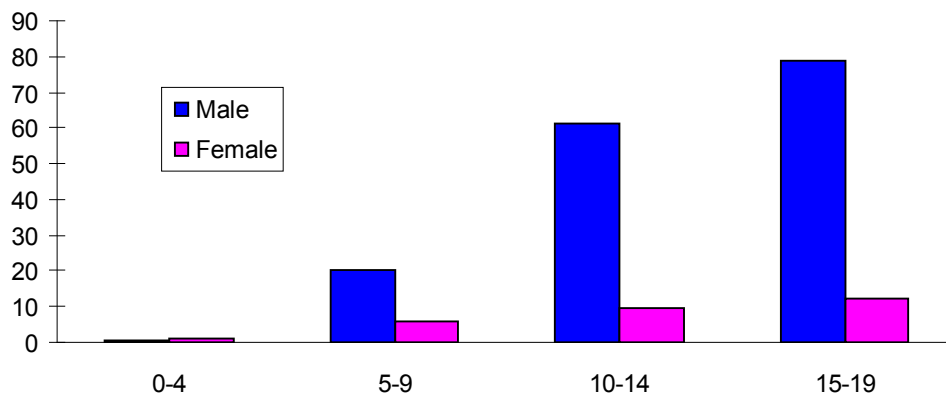
Casualties, Passengers, 2009-2011 Three Year Average



Casualties, Pedestrians, 2009-2011 Three Year Average



Casualties, Pedal Cyclists, 2009-2011 Three Year Average



These graphs show how casualties vary according to road user type, gender and age grouping. There are

- **more female passenger casualties** in the 5-9 and older age groups,
- **significantly more male pedestrian casualties** across all age groups,
- **significantly more male pedal cyclist casualties** across all age groups except for the under 5's.